



CLASSIC EDITION™

Harlequin® Classic Edition™ has long delivered capabilities and features that extend far beyond those of other PostScript®-based RIPs. Classic is fully compatible with the PostScript Language Level 3 specification and comes complete with input and output mechanisms, as well as a comprehensive Graphical User Interface (GUI). With the Classic Edition, our Harlequin RIP OEMs can

get to market with a complete product more quickly than with “core” only RIP versions.

After more than a decade, Harlequin Classic Edition continues to outpace the industry by offering an exemplary level of RIP performance: reliability, quality, speed, breadth, flexibility and responsiveness.

Recombine of pre-separated files

Accepts pre-separated files, including CMYK and spot colors, and recombines them into a composite file for output to color proofers.

Direct PDF printing

Processes and prints Portable Document Format (PDF) files directly, without first converting to PostScript.

Extra gray levels

Prints more than 4,000 shades of gray for maximum quality at almost any resolution.

In-RIP trapping

Processes overprinting and trapping commands in PostScript color composite jobs, including QuarkXPress® commands.

Support for compressed fonts

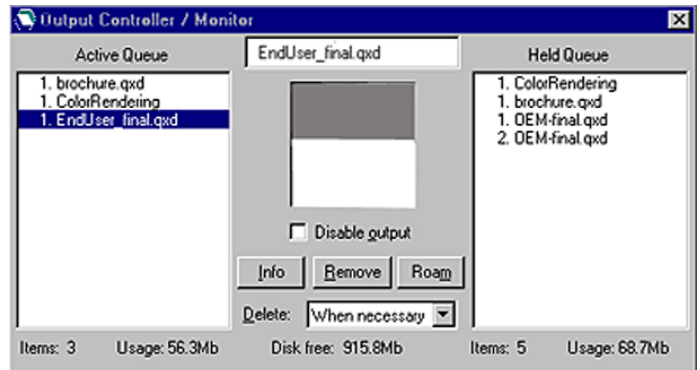
Saves disk space and downloading time.

Selectable separations

Output separations to any PostScript language printing system, even low-end monochrome devices, or soft proof on screen.

In-RIP OPI

Automatically creates and publishes low-res "preview files" for creative production and/or imposition, and stores and applies the high-res images during RIPping.



Harlequin® Classic Edition™: Throughput Controller

CLASSIC EDITION™

SOFTWARE SPECIFICATIONS

Supported Platforms / OS	Macintosh PowerMac / Mac OS 8.6, 9.0x Intel Pentium PC / Windows NT 4.x, Windows 98 / 2000 Unix / Sun® Solaris, SGI IRIX SMP (Symmetrical MultiProcessing) support for Intel
Input File Format Support	PostScript level 3, 2, 1; PDF 1.2, 1.3; EPS; JPEG; DCS; DCS2; TIFF 6
<i>(option)</i>	TIFF/IT-PI
Input Mechanisms	Appletalk, Spool, Socket, NTpipe, Serial
Supplied Fonts	Base 35 / choose one: Linotype Type I Bitstream Type42/TrueType
Font Support	Demand Loadable Fonts (DLD1) Harquin automatic conversion of Type I fonts into compact DLD1 font format allows use of more than 1,500 fonts per page Type0, Type I, Type2 (CFF), Type 3, Type 4, Type32, Type 42 (TrueType) CID fonts
<i>(option)</i>	Morisawa Fonts CID/OCF (requires license with Morisawa)
Graphics Support	Type 3 and Type 4 (including masked images) halftone, contone, 8-bit grayscale 8- and 10-bit Run Length Encoding (RLE)
Screening	Harquin Precision Screening™ (HPS™) - conventional halftone screening includes a wide range of screen rulings, special angles and dot shapes
<i>(options)</i>	Harquin Dispersed Screening™ (HDS™) - stochastic screening Error Diffusion Screening (EDS) - specialized inkjet screening (<i>available with ProofReady™ plugins only</i>)
In-RIP Trapping	<i>(option)</i> TrapWorks™
Color Output Support	Full implementation of PostScript LL3 DeviceN Separated or composite color output Recombine of pre-separate files for re-separation or composite output Output selected separations
<i>(option)</i>	ProofReady™ Plugins for Epson and HP color inkjet printers
Color Management	Supports PostScript CRDs
<i>(options)</i>	Harquin ICC Profile Processor™ (HIPP™) - support for device-independent color via ICC Input Profiles Harquin Full Color System™ (HFCS™) - complete, robust color management system (CMS)
Calibration	Calibration, dot gain, tone curve controls
<i>(OEM tool)</i>	Genlin™ Utility: auto-import of calibration values from the following devices: ■ X-Rite 408 ■ X-Rite DTP41 series ■ X-Rite DTP 32 ■ X-Rite DTP 12 ■ X-Rite 938
<i>(OEM tool)</i>	SetGold™ Utility: wizard-based tool for calibrating & gray balancing color printers <i>(available only with ProofReady™ Plugins)</i>



CLASSIC EDITION™

SOFTWARE SPECIFICATIONS (cont'd)

Media Management	Multiple cassette setup
Media Controls	Low media warning, automatic or manual feed options Supports inline processors
Media Saving (option)	Scatterproofing/ganging option
Output Controls	Preview (Roam) Save Page Buffers (PGBs) to disk Re-order output queues Abort output
Output Resolution Support	Device-dependent; up to 3600 dpi
Output Effects	Negative, mirror, define trim, rotate, scale
Output File Format Support	TIFF 6 (option) TIFF/IT-P1, CIP3
Localization (OEM tool)	Localization OEM toolkit - produce localizations of the Classic Edition GUI (option) Classic Edition Japanese GUI

www.globalgraphics.com

Global Graphics Software Inc.
 95 Sawyer Road, Waltham
 MA 02453 USA
 Tel: +1 781 392 1600
 Fax: +1 781 736 1949

Global Graphics Software Ltd
 Barrington Hall, Barrington
 Cambridge CB2 5RG UK
 Tel: +44 (0)1223 873800
 Fax: +44 (0)1223 873873